

Museo Thyssen-Bornemisza



Pablo Picasso
Harlequin with a Mirror, 1923
Level 0, Room 45

The Museo Thyssen-Bornemisza

The Museo Thyssen-Bornemisza, which contains one of the world's foremost and most distinguished private art collections, opened on 8th October 1992. Acquired over two generations, the collection is directly linked to the names of Heinrich Thyssen-Bornemisza (1875-1947) and Hans Heinrich Thyssen-Bornemisza (1921-2002). The most important group of paintings gathered together by the Thyssen-Bornemisza family was acquired by the Spanish State in July 1993 and spans a period dating from the late-13th century to the 1980s. In 1992 this historic collection was installed in the Palacio de Villahermosa after the building's conversion into a museum by the architect Rafael Moneo.

The Permanent Collection is distributed over three floors with a suggested tour beginning with Old Masters on Level 2. The visit starts with the Italian Primitives and continues with examples of Renaissance and Baroque art. The route includes two monographic rooms, one devoted to Renaissance portraiture (the genre best represented in the Museum), and the other to urban views dating from the 18th century.

The first rooms on Level 1 display works from the Dutch school, beginning with scenes from daily life, interiors and landscapes and ending with a selection of still lifes with Dutch paintings exhibited beside examples from other schools. The Modern Painting section begins in Room 29 and consists of two galleries devoted to North American artists of the 19th century – one of the Museum's most interesting features and novelties – and continues with examples of Impressionism, Post-Impressionism and German Expressionism, this last section being one of the Museum's most brilliant due to the high quality of the works it brings together.

Level 0 is reserved for the 20th century and contains outstanding examples of Cubism, abstract art, Surrealism, Pop Art and European post-war figurative art. The tour covers seven centuries of the history of painting.



Alfred Sisley
Flood at Port-Marly, 1876
 Level 2, Room H

The Colección Carmen Thyssen-Bornemisza

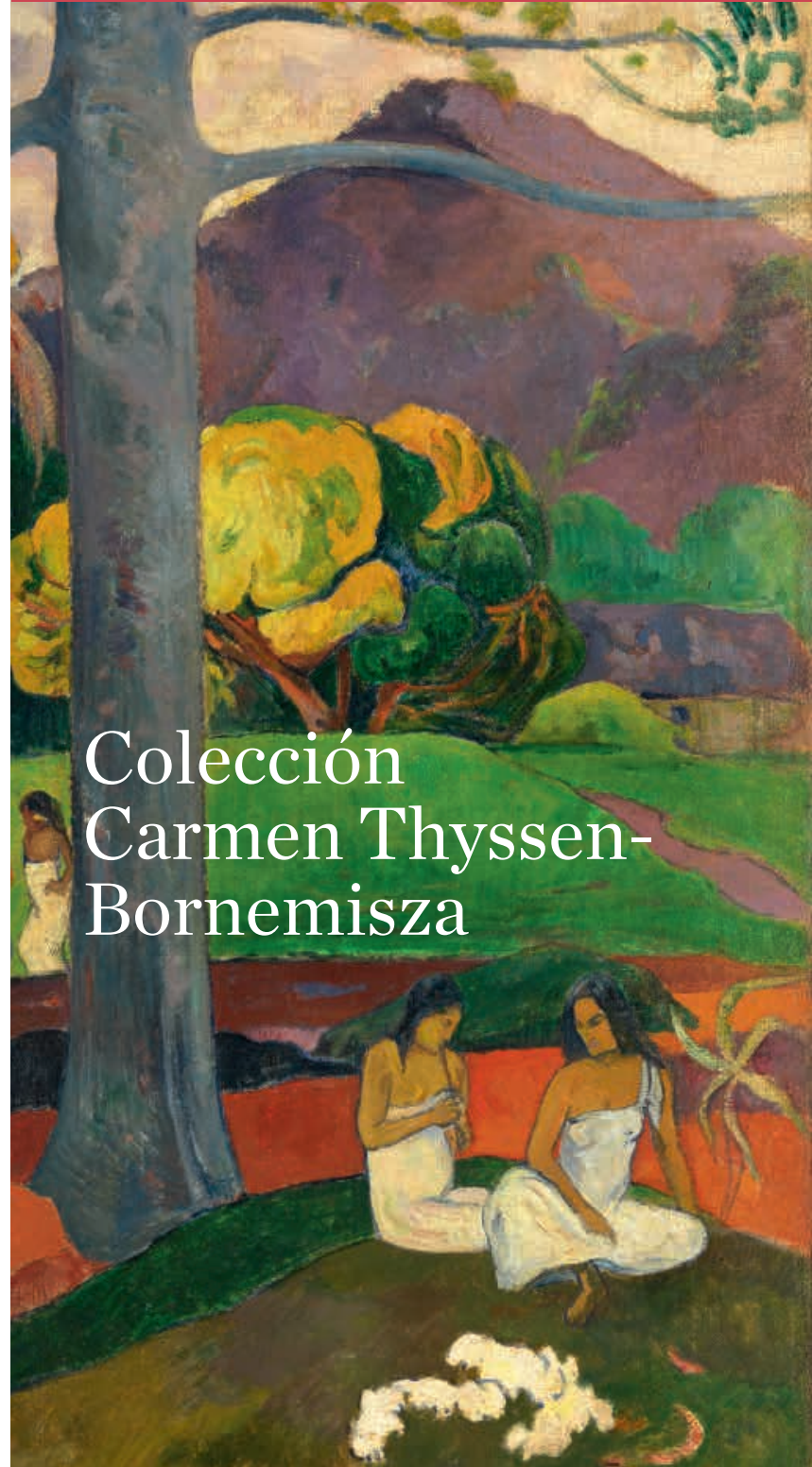
The Colección Carmen Thyssen-Bornemisza is exhibited in an extension which was added to the Palacio de Villahermosa in 2004. Consisting of more than two hundred paintings from both Spain and abroad, it spans the period from the 17th to the 20th century.

Carmen Thyssen-Bornemisza began collecting works of art in 1987. Her major contribution to the creation of the Museum and growing interest in collecting led her husband, Baron Hans Heinrich Thyssen-Bornemisza, to bequeath her in 1993 a large number of paintings by artists such as Fragonard, Courbet, Monet, Renoir, Gauguin, Rodin and Picasso which came to form the core of her Collection. Over the next few years she acquired works by masters such as Simone Martini, Canaletto, Guardi, Corot, Van Gogh, Braque, Nolde and Delaunay. Originally intended as an extension of the Museum's Permanent Collection, the Colección Carmen Thyssen-Bornemisza reveals the Baroness's preference for arcadian landscapes and the expressive qualities of colour.

The visit begins on Level 2, where the first rooms are dedicated to 17th-century Italian and Dutch painting. This area leads to a large gallery with five adjoining rooms, in which, except for the last, which resembles a chapel and contains a selection of Impressionist works, major 18th- and 19th-century landscape paintings are exhibited. Level 1 houses magnificent examples of late- and Post-Impressionist painting, together with a sizeable number of works by Gauguin and members of the Nabis group. This floor also contains two splendid rooms devoted to German Expressionism and Fauvism. The tour ends with a section on avant-garde art, after which it returns to the Palacio de Villahermosa.

>

Paul Gauguin
Mata Mua (In Olden Times), 1892 (detail)
 Level 1, Room L



Colección Carmen Thyssen- Bornemisza

Selection of works



Hans Holbein the Younger
Portrait of Henry VIII of England, c. 1537
Level 2, Room 5



Vittore Carpaccio
Young Knight in a Landscape, 1510
Level 2, Room 7



Albrecht Dürer
Jesus among the Doctors, 1506
Level 2, Room 8



Auguste Rodin
Christ and the Magdalene, c. 1905
Level 0, Hall



Edgar Degas
Racehorses in a Landscape, 1894
Level 2, Room H



Vincent van Gogh
"Les Vessenots" in Auvers, 1890
Level 1, Room 32



Caravaggio
Saint Catherine of Alexandria, c. 1598
Level 2, Room 12



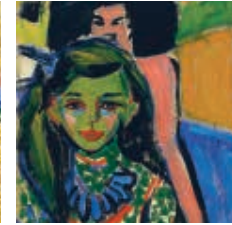
Canaletto
The Piazza San Marco in Venice, c. 1723–24
Level 2, Room 17



Rubens
Venus and Cupid, c. 1606–11
Level 2, Room 19



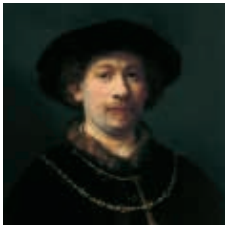
André Derain
Waterloo Bridge, 1906
Level 1, Room 34



Ernst Ludwig Kirchner
Fräzli in front of a Carved Chair, 1910
Level 1, Room 36



Franz Marc
The Dream, 1912
Level 1, Room 38



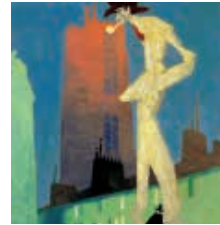
Rembrandt
Self-Portrait Wearing a Hat and Two Chains, c. 1642–43
Level 2, Room 21



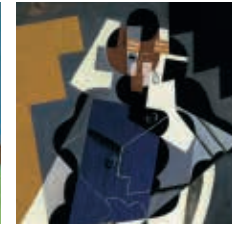
Jacob Isaacks van Ruisdael
View of Naarden, 1647
Level 1, Room 26



Martin Johnson Heade
Orchid and Hummingbird near a Waterfall, 1902
Level 2, Room C



Lyonel Feininger
The White Man, 1907
Level 1, Room N



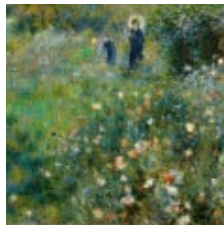
Juan Gris
Seated Woman, 1917
Level 1, Room P



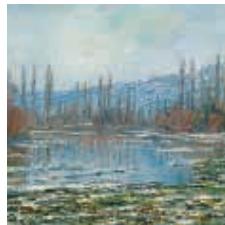
Edward Hopper
Hotel Room, 1931
Level 1, Room 40



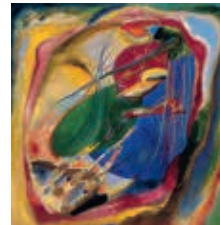
Jean-Baptiste-Camille Corot
Diana Bathing (The Fountain), c. 1869–70
Level 2, Room G



Pierre-Auguste Renoir
Woman with a Parasol in a Garden, 1875
Level 1, Room 32



Claude Monet
The Thaw at Vétheuil, 1881
Level 1, Room 32



Wassily Kandinsky
Picture with Three Spots, no. 196, 1914
Level 0, Room 43



Salvador Dalí
Dream Caused by the Flight of a Bee around a Pomegranate a Second before Waking Up, 1944
Level 0, Room 45



Roy Lichtenstein
Woman in Bath, 1963
Level 0, Room 48

Information

Museo Thyssen-Bornemisza

Paseo del Prado, 8
28014 Madrid
Tel. (+34) 902 760 511
mtb@museothyssen.org
www.museothyssen.org

Opening hours

Tuesday–Sunday: 10am–7pm. Monday:
12pm–4pm. Closed 1st January, 2nd May
and 25th December. Ticket office closes
at 6:30pm. Galleries are cleared five
minutes before closing time.

Full-access ticket

Provides access to the entire museum
for one day, including all temporary
exhibitions on view at the time.

Ticket sales

Our temporary exhibition halls have
limited capacity. To guarantee admission
to a show on a certain date and time, we
recommend purchasing tickets in advance.

Advance ticket sales:

- Museum ticket office
- www.museothyssen.org
- Tel. (+34) 902 760 511

Tickets

- Individual: €12
- Reduced rate (subject to proof
of status): €8 (over-65s, pensioners,
students, Faculty of Fine Arts staff,
members of families with 3 or more
children, Youth Card holders and visitors
with a minimum disability rating of 33%).
- Free:
 - Mondays, all visitors from 12 to 4pm,
courtesy of MasterCard.
 - Children under 12 accompanied
by an adult.
 - Visitors who are officially unemployed
(subject to proof of status).
- Groups: €10 (minimum of 7 people.
Individual discounts not applicable).

Tours with independent guides

Reservations: www.museothyssen.org.
Check holidays.

Photography and video

Non-flash photography is permitted
inside the Museum.

Transport

“Metro” station: Banco de España.
Buses: 1, 2, 5, 9, 10, 14, 15, 20, 27, 34, 37, 45,
51, 52, 53, 74, 146 and 150.
Train stations: Atocha, Sol and Recoletos.

Visitor services

Tel. (+34) 902 760 511

Be a Friend of the Museum

For information please go to the Friends
of the Museum information desk (in the
lobby) or [www.museothyssen.org/en/
thyssen/hazte_amigo](http://www.museothyssen.org/en/thyssen/hazte_amigo)

Education

For information on the Museum’s educational
activities and programmes contact:
www.educathyssen.org or (+34) 913 600 334

Shop-bookstore

Level 0.

Cafe-Restaurant

Level 0.

Audio guide service

Available in Spanish, English, French,
German and Italian. Coming soon in
Russian, Chinese, Japanese and Portuguese.

Accessible museum

The museum has been adapted to remove
architectural barriers and equipped with
special signage to make it accessible to
all visitors. For further information about
activities and materials designed for visitors
with special needs, please contact us.

Cloakroom

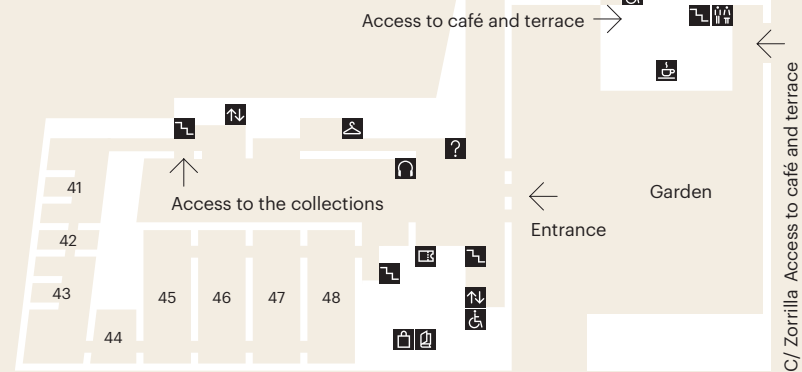
Objects that cannot be put through the
scanner, animals, food, drinks and plants
are not allowed inside the museum. Visit
the museum website for a complete list
of prohibited items. Pushchairs for young
children and wheelchairs are available
on request.

Please refrain from using mobile phones
in the exhibition rooms.

0

Level 0

Temporary Exhibition Rooms



Paseo del Prado

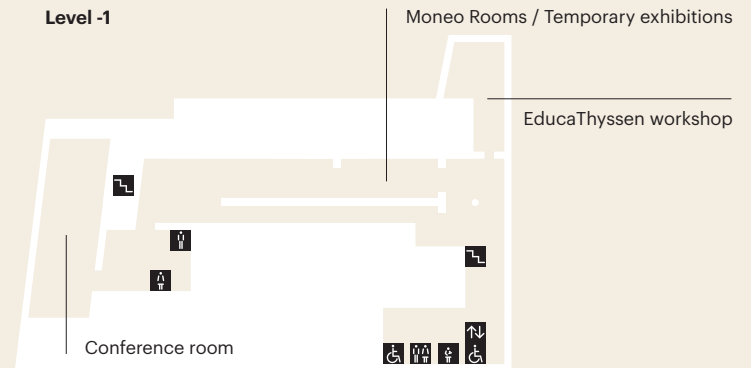
Permanent Collection

- 41 42 **European Painting
First Half of the 20th Century**
Cubism and its wake
- 43 **Pioneers of Abstract Art**
- 44 **Dada and Surrealism**
- 45 **Surrealism and the New Order**
- 46 **North-American Painting, 20th Century**
Abstract Expressionism
and its context
- 47 **Neo-Dada and Pop Art**
- 48 **European Post-war
Abstract and Figurative Art**

- Café-Restaurant
- Toilets/Baby change
- Lift
- Stairs
- Information
- Ticket office
- Cloakroom
- Audio guides
- Shop-bookstore
- Adapted lift
- Mother and baby room

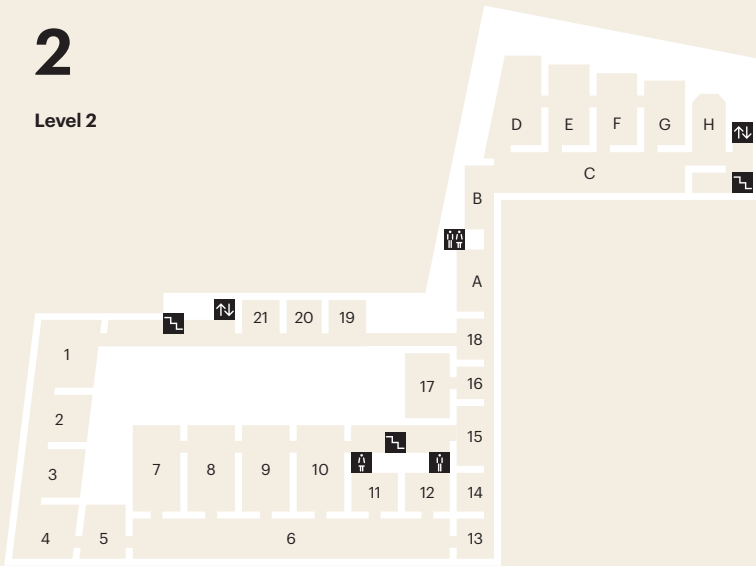
-1

Level -1



2

Level 2

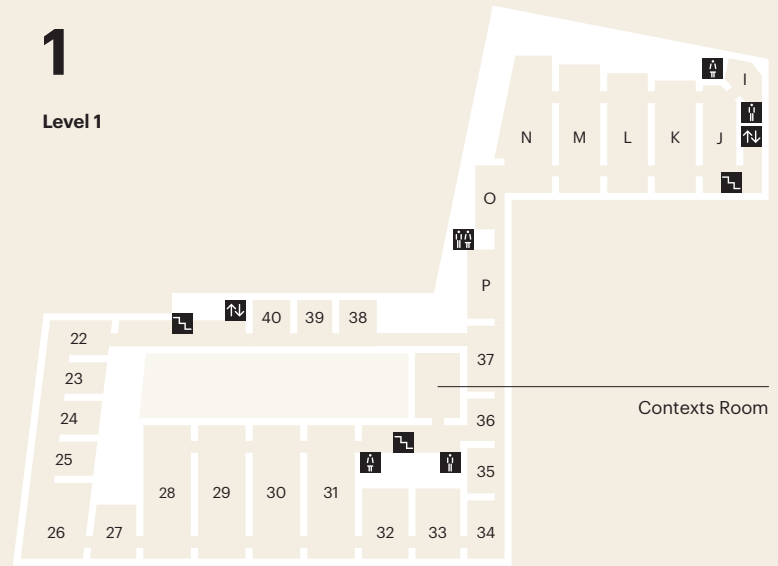


- | | Permanent Collection |
|----------|---|
| 1 | Italian Primitives |
| 2 | German and Spanish Painting 15th Century |
| 3 | Early Netherlandish Painting |
| 4 | Italian Painting, 15th Century |
| 5 | Renaissance Portraiture |
| 6 | Villahermosa Gallery |
| 7 | Italian Painting, 16th Century |
| 8 9 | German Painting 15th and 16th Centuries |
| 10 | Netherlandish Painting 16th Century |
| 11 | Titian, Tintoretto, Bassano, El Greco |
| 12 | Caravaggio and the Baroque |
| 13 14 15 | Italian Painting, French and Spanish Painting, 17th Century |
| 16 17 18 | Italian Painting, 18th Century |
| 19 | Flemish Painting, 17th Century |
| 20 | Flemish and Dutch Painting 17th Century
Italianate Trends |
| 21 | Dutch Painting, 17th Century
Portraits |

- | | Colección Carmen Thyssen-Bornemisza |
|-----|---|
| A | Italian Painting, 17th Century |
| B | Flemish and Dutch Painting 17th Century |
| C | Gallery of Vedute and Landscape Painting 18th and 19th Centuries |
| D | Painting, 17th Century |
| E F | North-American Painting 19th Century |
| G | European Painting 19th Century
Naturalism |
| H | European Painting 19th Century
Impressionism |

1

Level 1



- | | Permanent Collection |
|----------|---|
| 22 23 24 | Dutch Painting, 17th Century |
| 25 26 | Scenes of Daily Life, Interiors and Landscapes |
| 27 | Still Life 17th Century |
| 28 | French and English Painting 18th Century |
| 29 30 | North-American Painting 19th Century |
| 31 | European Painting 19th Century
Romanticism, Naturalism and Realism |
| 32 33 | European Painting 19th Century
Impressionism and Post-Impressionism |
| 34 35 36 | European Painting First Half of the 20th Century
Forms of Expressionism |
| 37 38 | |
| 39 40 | Realism between the Wars |

- | | Colección Carmen Thyssen-Bornemisza |
|-------|---|
| I | Rest area |
| J | North-American Painting 19th Century
Impressionism |
| K L M | European Painting 19th Century
Impressionism and Post-Impressionism |
| N O | European Painting First Half of the 20th Century
Forms of Expressionism |
| P | Early Avant-garde |

As the Museo Thyssen-Bornemisza makes constant contributions to temporary exhibitions, works from the Collection are often out on loan. The absence of such works may lead to temporary replacements, changes in installations and the placing of notices with information regarding the loan. We apologise for any inconvenience this may cause.