

Museo Nacional
Thyssen-Bornemisza

ARS V TINA
ANIMVM QV
POSSES PVLC
RIS NVLLATA
MCCCCI



Pablo Picasso
Harlequin with a Mirror, 1923
 Level 0, Room 45

The Thyssen-Bornemisza Collection

The Museo Thyssen-Bornemisza, which contains one of the world's foremost and most distinguished private art collections, opened on 8th October 1992. Acquired over two generations, the collection is directly linked to the names of Heinrich Thyssen-Bornemisza (1875-1947) and Hans Heinrich Thyssen-Bornemisza (1921-2002). The most important group of paintings gathered together by the Thyssen-Bornemisza family was acquired by the Spanish state in July 1993 and spans a period dating from the late 13th century to the 1980s. In 1992 this historic collection was installed in the Palace of Villahermosa after the building's conversion into a museum by the architect Rafael Moneo.

The permanent collection is distributed over three floors with a suggested tour beginning with Old Masters on Level 2. The visit starts with the Italian Primitives and continues with examples of Renaissance and Baroque art. The route includes two monographic rooms, one devoted to Renaissance portraiture (the genre best represented in the museum), and the other to urban views dating from the 18th century.

The first rooms on Level 1 display works from the Dutch school, beginning with scenes from daily life, interiors and landscapes and ending with a selection of still lifes with Dutch paintings exhibited beside examples from other schools. The Modern Painting section begins in Room 29 and consists of two galleries devoted to North American artists of the 19th century – one of the museum's most interesting features and novelties – and continues with examples of Impressionism, Post-Impressionism and German Expressionism, this last section being one of the Museum's most brilliant due to the high quality of the works it brings together.

Level 0 is reserved for the 20th century and contains outstanding examples of Cubism, abstract art, Surrealism, Pop Art and European post-war figurative art. The tour covers seven centuries of the history of painting.



Alfred Sisley
Flood at Port-Marly, 1876
 Level 2, Room H

The Carmen Thyssen-Bornemisza Collection

The Carmen Thyssen-Bornemisza Collection is exhibited in an extension which was added to the Palace of Villahermosa in 2004. Consisting of more than two hundred paintings from both Spain and abroad, it spans the period from the 17th to the 20th century.

Carmen Thyssen-Bornemisza began collecting works of art in 1987. Her major contribution to the creation of the museum and growing interest in collecting led her husband, Baron Hans Heinrich Thyssen-Bornemisza, to bequeath to her in 1993 a large number of paintings by artists such as Fragonard, Courbet, Monet, Renoir, Gauguin, Rodin and Picasso which came to form the core of her collection. Over the next few years she acquired works by masters such as Simone Martini, Canaletto, Guardi, Corot, Van Gogh, Braque, Nolde and Delaunay. Originally intended as an extension of the museum's permanent collection, the Carmen Thyssen-Bornemisza Collection reveals the baroness's preference for arcadian landscapes and the expressive qualities of colour.

The visit begins on Level 2, where the first rooms are dedicated to 17th-century Italian and Dutch painting. This area leads to a large gallery with five adjoining rooms, in which, except for the last, which resembles a chapel and contains a selection of Impressionist works, major 18th- and 19th-century landscape paintings are exhibited. Level 1 houses magnificent examples of late- and Post-Impressionist painting, together with a sizeable number of works by Gauguin and members of the Nabis group. This floor also contains two splendid rooms devoted to German Expressionism and Fauvism. The tour ends with a section on avant-garde art, after which it returns to the Palace of Villahermosa.

Front cover

Domenico Ghirlandaio
Portrait of Giovanna degli Albizzi Tornabuoni,
 1489-90 (detail). Level 2, Room 5

Back cover

Vincent Van Gogh
"Les Vessenots" in Auvers, 1890 (detail)
 Level 1, Room 32

Selection of works



Hans Holbein the Younger
Portrait of Henry VIII of England, c. 1537
Level 2, Room 5



Vittore Carpaccio
Young Knight in a Landscape, c. 1505
Level 2, Room 7



Albrecht Dürer
Jesus among the Doctors, 1506
Level 2, Room 8



Auguste Rodin
Christ and the Magdalene, c. 1905
Level 0, Hall



Edgar Degas
Racehorses in a Landscape, 1894
Level 2, Room H



Vincent van Gogh
"Les Vessenois" in Auvers, 1890
Level 1, Room 32



Caravaggio
Saint Catherine of Alexandria, c. 1598–99
Level 2, Room 12



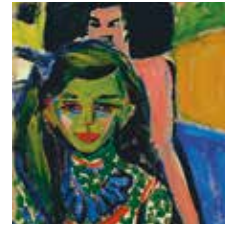
Canaletto
The Piazza San Marco in Venice, c. 1723–24
Level 2, Room 17



Rubens
Venus and Cupid, c. 1606–11
Level 2, Room 19



André Derain
Waterloo Bridge, 1906
Level 1, Room 34



Ernst Ludwig Kirchner
Fränzi in front of a Carved Chair, 1910
Level 1, Room 36



Franz Marc
The Dream, 1912
Level 1, Room 38



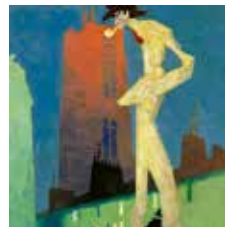
Rembrandt
Self-Portrait Wearing a Hat and Two Chains, c. 1642–43
Level 2, Room 21



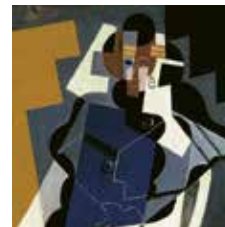
Jacob Isaacks van Ruisdael
View of Naarden, 1647
Level 1, Room 26



Martin Johnson Heade
Orchid and Hummingbird near a Waterfall, 1902
Level 2, Room C



Lyonel Feininger
The White Man, 1907
Level 1, Room N



Juan Gris
Seated Woman, 1917
Level 1, Room P



Edward Hopper
Hotel Room, 1931
Level 1, Room 40



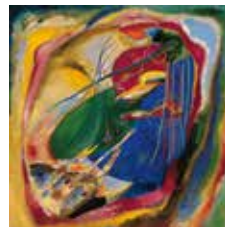
Jean-Baptiste-Camille Corot
Diana Bathing (The Fountain), c. 1869–70
Level 2, Room G



Pierre-Auguste Renoir
Woman with a Parasol in a Garden, 1875
Level 1, Room 32



Claude Monet
The Thaw at Vétheuil, 1881
Level 1, Room 32



Wassily Kandinsky
Picture with Three Spots, no. 196, 1914
Level 0, Room 43



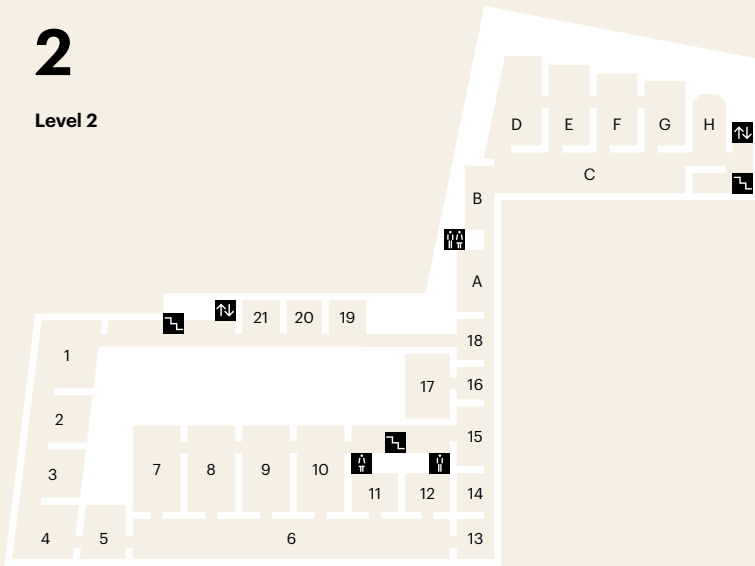
Salvador Dalí
Dream Caused by the Flight of a Bee around a Pomegranate a Second before Waking Up, 1944
Level 0, Room 45



Roy Lichtenstein
Woman in Bath, 1963
Level 0, Room 48

2

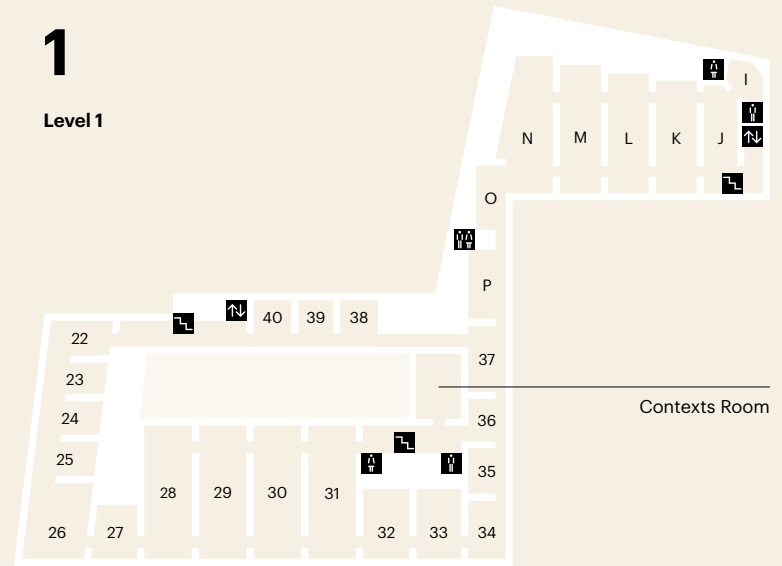
Level 2



	Permanent Collection	Carmen Thyssen-Bornemisza Collection
1	Italian Primitives	A Italian Painting, 17th Century
2	German and Spanish Painting 15th Century	B Flemish and Dutch Painting 17th Century
3	Early Netherlandish Painting	C Gallery of Vedute and Landscape Painting 18th and 19th Centuries
4	Italian Painting, 15th Century	D Painting, 17th Century
5	Renaissance Portraiture	E F North American Painting 19th Century
6	Villahermosa Gallery	G European Painting 19th Century Naturalism
7	Italian Painting, 16th Century	H European Painting 19th Century Impressionism
8 9	German Painting 15th and 16th Centuries	
10	Netherlandish Painting 16th Century	
11	Titian, Tintoretto, Bassano, El Greco	
12	Caravaggio and the Baroque	
13 14 15	Italian, French and Spanish Painting, 17th Century	
16 17 18	Italian Painting, 18th Century	
19	Flemish Painting, 17th Century	
20	Flemish and Dutch Painting 17th Century Italianate Trends	
21	Dutch Painting, 17th Century Portraits	

1

Level 1



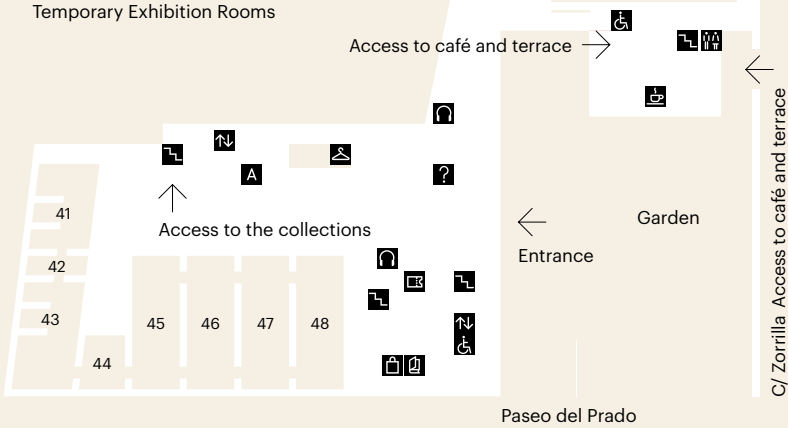
	Permanent Collection	Carmen Thyssen-Bornemisza Collection
22 23 24	Dutch Painting, 17th Century	I Rest area
25 26	Scenes of Daily Life, Interiors and Landscapes	J North American Painting 19th Century Impressionism
27	Still Life 17th Century	K L M European Painting 19th Century Impressionism and Post-Impressionism
28	French and English Painting 18th Century	N O European Painting First Half of the 20th Century Forms of Expressionism
29 30	North American Painting 19th Century	P Early Avant-garde
31	European Painting 19th Century Romanticism, Naturalism and Realism	
32 33	European Painting 19th Century Impressionism and Post-Impressionism	
34 35 36	European Painting First Half of the 20th Century Forms of Expressionism	
37 38		
39 40	Realism between the Wars	

As the Museo Nacional Thyssen-Bornemisza makes constant contributions to temporary exhibitions, works from the collection are often out on loan. The absence of such works may lead to temporary replacements, changes in installations and the placing of notices with information regarding the loan. We apologise for any inconvenience this may cause.

0

Level 0

Temporary Exhibition Rooms



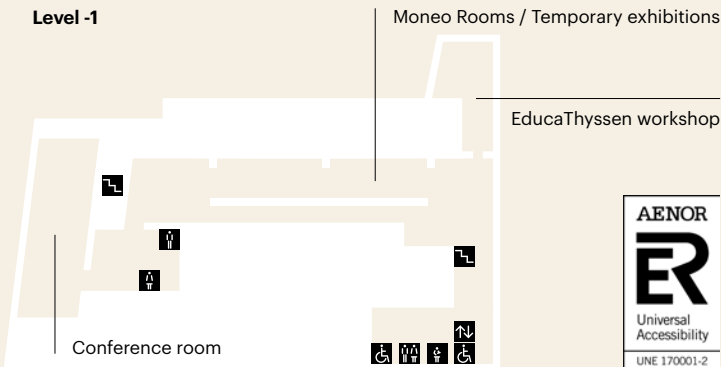
Permanent Collection

- 41 42 **European Painting
First Half of the 20th Century**
Cubism and its wake
- 43 **Pioneers of Abstract Art**
- 44 **Dada and Surrealism**
- 45 **Surrealism and the New Order**
- 46 **North American Painting, 20th Century**
Abstract Expressionism
and its context
- 47 **European Post-war
Abstract and Figurative Art**
- 48 **Neo-Dada and Pop Art**

- Café-Restaurant
- Toilets/Baby change
- Lift
- Stairs
- Information
- Ticket office
- Cloakroom
- Audio guides
- Shop-bookstore
- Adapted lift
- Mother and baby room
- Friends of the Museum

-1

Level -1



Museo Nacional Thyssen-Bornemisza

Paseo del Prado, 8
28014 Madrid
mtb@museothyssen.org
www.museothyssen.org/en

Visitors' Centre

Tel. (+34) 917 911 370
cavthyssen@museothyssen.org

Opening hours

Tuesday to Sunday, 10 am to 7 pm.
Monday open from 12 pm to 4 pm. Closed
on 1 January, 1 May and 25 December.
Ticket desk open until 6.30 pm. All
galleries are cleared five minutes before
closing time.

Ticket sales

We recommend purchasing in advance at:
• <https://entradas.museothyssen.org>
• Tel. (+34) 917 911 370

Prices

- General: € 13
- Reduced rate: € 9
- Groups: € 11 (7 people or more)
- Free: every Monday thanks
to Mastercard

Prices subject to changes. See current
prices, discounts and other free
admissions on our website.

Transport

Metro stop: Banco de España.
Bus lines: 10, 14, 27, 34, 37 and 45.
Train: Atocha and Sol stations.



**MUSEO NACIONAL
THYSSEN-
BORNEMISZA**

Guided tours

See our website.

Education

www.educathyssen.org
Tel. (+34) 913 600 334

Shop-Bookshop

Ground floor and on-line store:
www.tienda.museothyssen.org/en

Café-Restaurant

Ground floor.

Audio guide service

Available in Spanish, English, French,
German, Italian, Russian, Chinese,
Japanese, Portuguese and Korean.

Cloakroom

See the conditions on our website.
Pushchairs, walking stick chairs and
wheelchairs are available to the public.

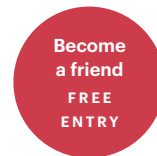
Photos and video

Photographs and videos without a flash
are permitted.

Accessible museum

The Museum is architecturally adapted
and has signage resources to provide
easier access for its visitors. Information
on the activities and materials designed
for the public with special needs on our
website.

Please do not use mobile phones
in the galleries.



Information at the Friends of the Museum
Desk and on our website