

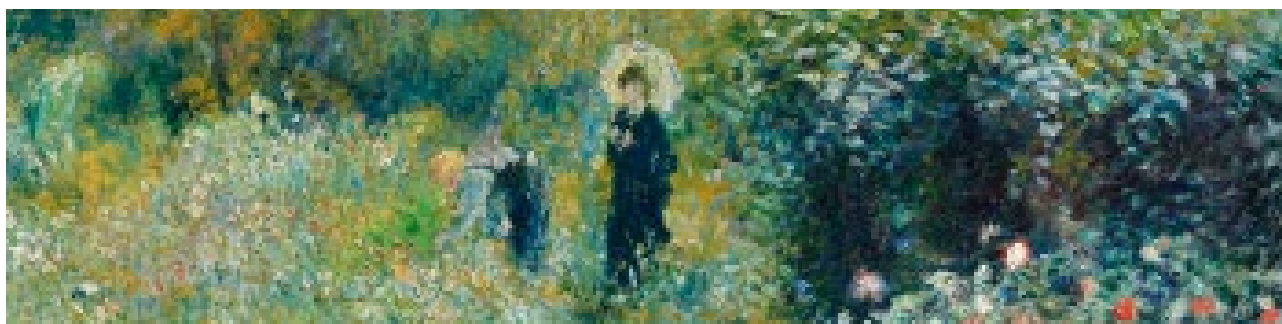
# Museo Nacional Thyssen-Bornemisza

A WALK THROUGH THE HISTORY OF ART

**F.I.T.**  
15% off  
**GROUPS**  
+20% off

## Thyssen Ticket Prices. *Tourism professionals* 2022

	TYPE OF ADMISSION	TOURISM PROFESSIONALS	GENERAL PUBLIC
<b>Single admission</b>	GENERAL ADMISSION	€ 11.05	€ 13.00
	REDUCED ADMISSION	€ 9.00	€ 9.00
	FREE ADMISSION	€ 0.00	€ 0.00
	GROUP ADMISSION (MINIMUM 7 PEOPLE)	€ 10.40	€ 11.00
	UNDATED ADMISSION <sup>1</sup>	€ 10.40	€ 11.00
<b>Audioguides</b>	SINGLE TICKET	€ 4.50	€ 5.00
<b>Paseo del Arte Pass</b>	ON AND OFFLINE <sup>2</sup>	€ 32	€ 32



Pierre-Auguste Renoir, *Woman with a Parasol in a Garden* (detail), 1875  
Museo Nacional Thyssen-Bornemisza, Madrid.

Paseo del Prado, 8. Madrid  
(+34) 91 791 13 70  
[www.museothyssen.org](http://www.museothyssen.org)

<sup>1</sup>. Minimum number of 50 undated tickets per purchase.

<sup>2</sup>. The Paseo del Arte Pass price is subject to change.

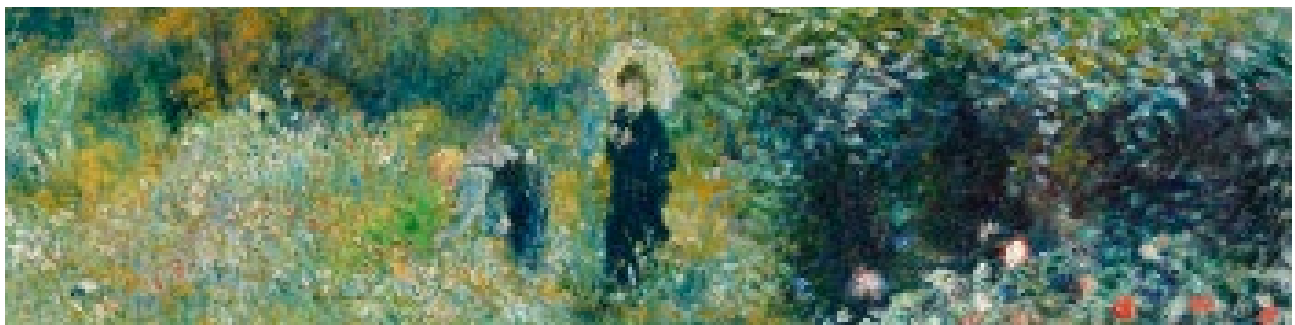
# Museo Nacional Thyssen-Bornemisza

A WALK THROUGH THE HISTORY OF ART

**F.I.T.**  
15% off  
**GROUPS**  
+20% off

## Thyssen Ticket Prices. *Tourism professionals* 2021

	TYPE OF ADMISSION	TOURISM PROFESSIONALS	GENERAL PUBLIC
<b>Ticket + menu</b>	GENERAL ADMISSION + ADULT MENU	€ 25.05	€ 28.50
	REDUCED ADMISSION + ADULT MENU	€ 23.00	€ 24.50
	FREE ADMISSION + CHILD MENU	€ 9.00	€ 10.00
	GROUP ADMISSION + ADULT MENU	€ 24.40	€ 26.50
<b>Touristic visits</b>	OUT-OF-HOURS WITH OWN GUIDE <sup>3</sup>	€ 34.00	€ 40.00
	OUT-OF-HOURS WITH MUSEUM GUIDE <sup>3</sup>	€ 62.00	€ 71.50
	TOURS & TALKS <sup>4</sup>	€ 25.00	€ 25.00



Pierre-Auguste Renoir, *Woman with a Parasol in a Garden* (detail), 1875  
Museo Nacional Thyssen-Bornemisza, Madrid.

Paseo del Prado, 8. Madrid  
(+34) 91 791 13 70  
[www.museothyssen.org](http://www.museothyssen.org)

<sup>3</sup>. Permanent collection: minimum 7 people and maximum 27 people. Temporary exhibitions: minimum 7 people and maximum 22 people.

<sup>4</sup>. Permanent collection: minimum 12 people and maximum 27 people. Temporary exhibitions: minimum 12 people and maximum 22 people.

## Information and requirements about reduced and free entry to the museum. *Tourism Professionals*

### Concessions apply to the following

Students regardless of age and nationality, with valid student card and in force (university, college, graduate, doctorate ...).

Visitors over 65 with ID card or passport, valid and in force.

Pensioners with pensioner card or health card indicating that condition, valid and in force.

Members duly accredited as large family with large family card, valid and in force.

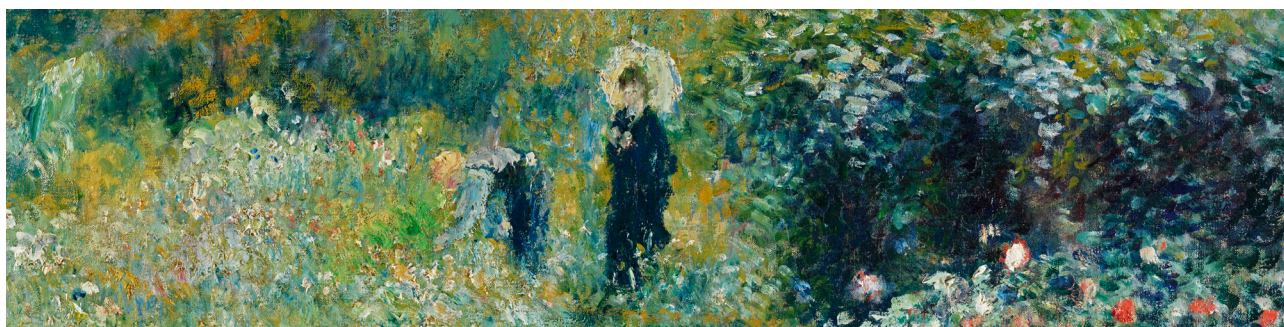
### Free entry applies to the following

Children and young people under the age of 18 (children under 12 must be accompanied by an adult).

Holders of valid youth card, and in force (only at the museum ticket office).

Unemployed with an official certification, valid and in force.

Citizens with disability above 33% with disability card, valid and in force. A person accompanying the disabled person will be entitled to a free ticket when their assistance is required to facilitate the visit (this condition should be stated on the disability card and/or official document expended by the relevant public authority).



Pierre-Auguste Renoir, *Woman with a Parasol in a Garden* (detail), 1875 Museo Nacional Thyssen-Bornemisza, Madrid.

Paseo del Prado, 8. Madrid  
(+34) 917 911 370  
[www.museothyssen.org](http://www.museothyssen.org)

## Information and requirements about reduced and free entry to the museum. *Tourism Professionals*

### Free entry applies to the following

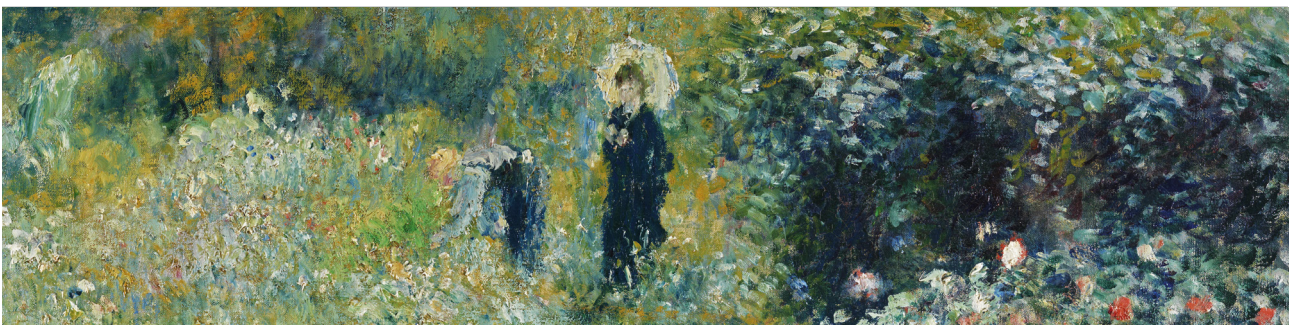
Teachers with valid documentation such as ITIC card.

Individual and institutional members of ICOM (International Council of Museums) who can show proof employment with the institutional member and whose membership coincides with the sticker's current year (to be collected only one ticket per card at the Information desk).

Members duly accredited as large family with large family card, valid and in force whose tickets are purchased in the same purchase and make the visit at the same time\*\*.

\* Please take into account this step in order to arrive with time enough at the access control when your visit is booked. These tickets purchased in advance in the museum ticket-office will also require status proof accreditation at the admission point to the galleries on the day of the visit.

\*\* It is also applied to two children if one of them suffers from any disability or in the case of parent death.



Pierre-Auguste Renoir, *Woman with a Parasol in a Garden* (detail), 1875 Museo Nacional Thyssen-Bornemisza, Madrid.

Paseo del Prado, 8. Madrid  
(+34) 917 911 370  
[www.museothyssen.org](http://www.museothyssen.org)